



SPARTEK SYSTEMS
GEOPHYSICAL INSTRUMENTATION

Model SS1009 USB Interface Box Install Guide

**Installation Manual
10011592**

Document Revision History			
Revision	Name	Date	Comment
01	K. Smith	January 10, 2005	

Disclaimer

Spartek Systems makes every effort to ensure the accuracy of the content of this manual. We would certainly welcome any suggestions as to how we can improve the content for any future manuals. This manual may be updated periodically which will be reflected in the above Document Revision History. Spartek Systems declines any liability that may arise out of inaccuracies in this document.

We thank you for making Spartek Systems your equipment provider of choice.

Table of Contents

Table of Contents.....	3
1. General Install Instructions	4
1.1. Overview	4
1.2. Requirements	4
1.3. General Install Comments	5
2. Spartek Install CD or Web Install Package.....	6
2.1. Spar95 Install CD	6
2.2. Spar95 Web Install Package	6
3. Installing on Windows XP	7
4. Installing on Windows 2000.....	12
5. Installing on Windows 98 or ME	17

1. General Install Instructions

1.1. Overview

This document covers the installation procedure for the SS1009 USB Interface Box on all supported operating systems.



SS1009 USB Interface Box

1.2. Requirements

- SS1009 USB Interface Box
- Spartek Install CD or Web Install Package
- Computer with free USB port and CD-ROM drive
- Supported operating system: Windows XP, 2000, 98 or ME
- Spar95 at least Version 1.8.9.952 or SparGauge software

Note: All Spartek Systems software that supports the SS1009 will come with the required drivers on the same install CD.

1.3. General Install Comments

- 1) Insert and install the software on the provided Spartek Systems CD or Web Install Package**
- 2) Plug the SS1009 into the computer's USB port**

Notes:

- the SS1009 can NOT be installed through a USB hub – it must be plugged in directly to the PC USB port
- if the SS1009 is plugged into a different USB port on the same computer, you may be asked to install the drivers again
- if the SS1009 is not detected on a USB port, try another USB port
- if you have any problems with the installation, contact Spartek Systems for technical support

2. Spartek Install CD or Web Install Package

Before plugging in the SS1009 USB Interface Box, at least 1 of the following installs must be completed.

2.1. Spar95 Install CD

- 1) Insert CD into drive
- 2) If the program does not run automatically, run **Start95.exe** on the CD
- 3) Plug in SS1009 USB Interface Box and follow this guide

2.2. Spar95 Web Install Package

- 1) Download and install: Spar95SP4d.exe
- 2) Plug in SS1009 USB Interface Box and follow this guide

3. Installing on Windows XP

These steps cover the majority of the situations that may be encountered during the install. If a step does not apply to your situation, skip to the next step.

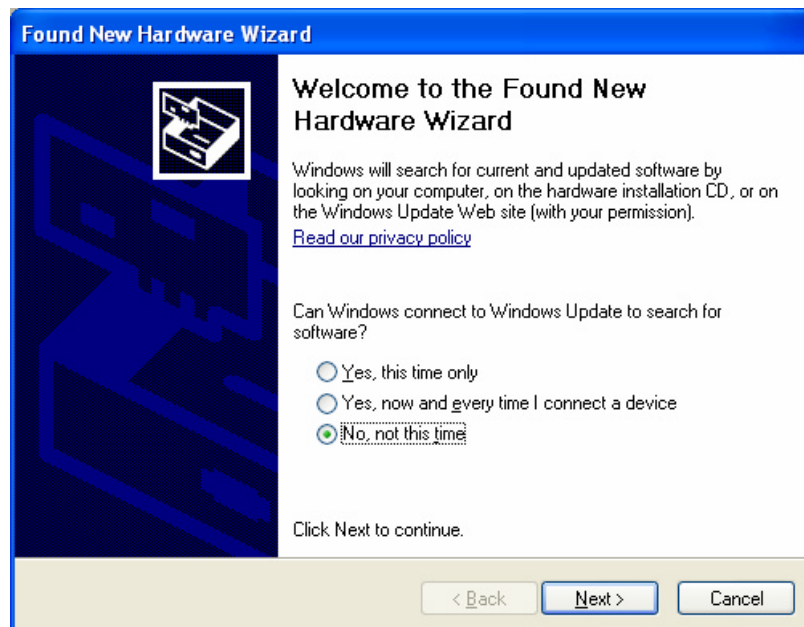
Step 1

- Connect the SS1009 USB cable to the USB connector on the PC
- Windows XP should detect the new hardware and pop-up a box in the lower right-hand corner



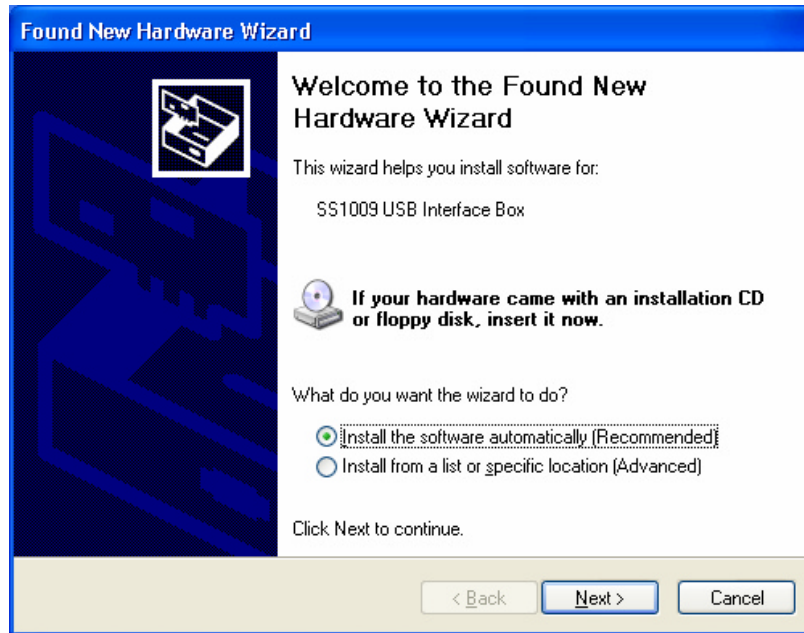
Step 2

- The following window may pop-up
- If you do not see this window, skip to the next step
- Select 'No, not this time'
- Click 'Next



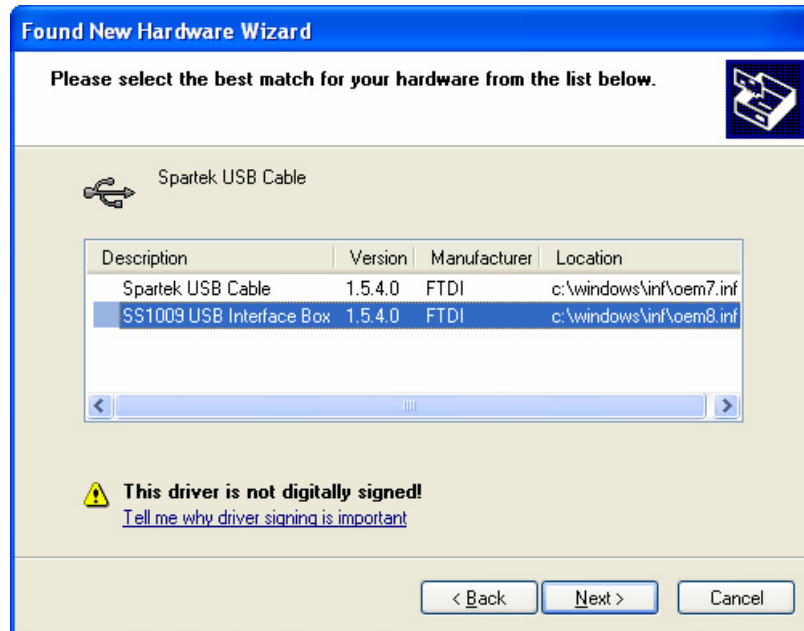
Step 3

- Select 'Install the software automatically'
- Click 'Next'



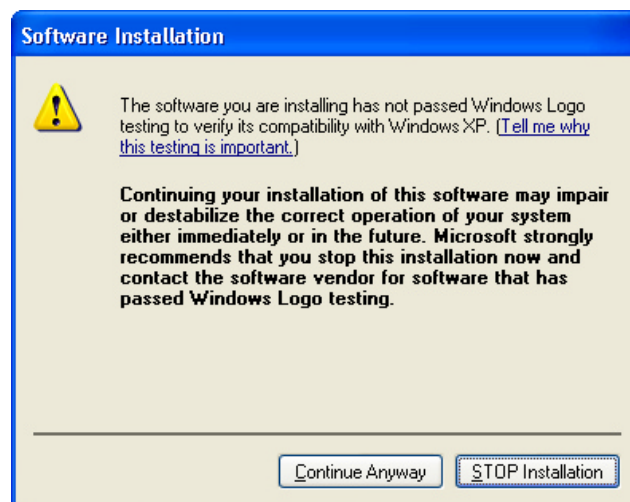
Step 4

- The following window may pop-up
- If you do not see this window, skip to the next step
- Select 'SS1009 USB Interface Box'
- Click 'Next'



Step 5

- A warning window may pop-up
- If you do not see this window, skip to the next step
- Click 'Continue Anyways'



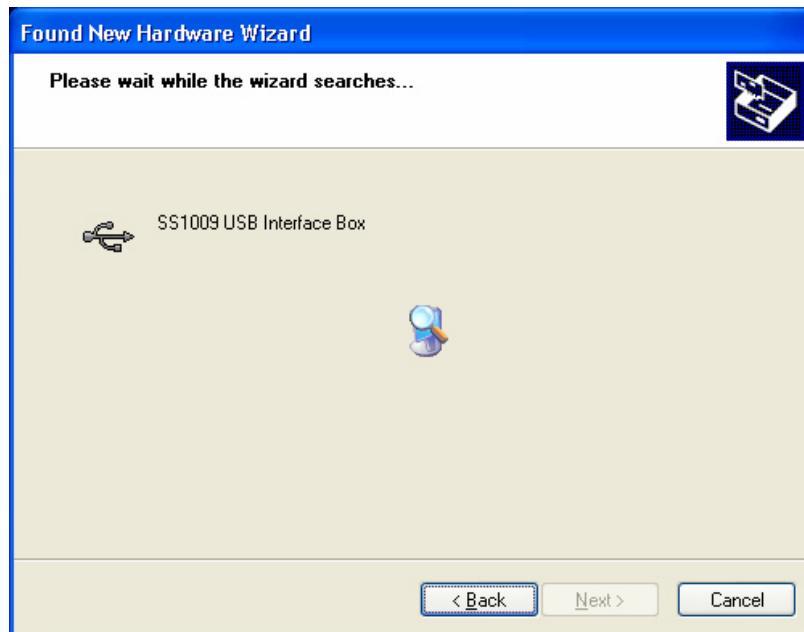
Step 6

- Windows XP should search for and install the drivers automatically
- If the drivers are NOT found automatically, try these locations:

C:\Program Files\Spartek Systems\SparUSB

or

On the install CD in the **USBDrivers** directory



Step 7

- Click 'Finish'



Installation Complete

4. Installing on Windows 2000

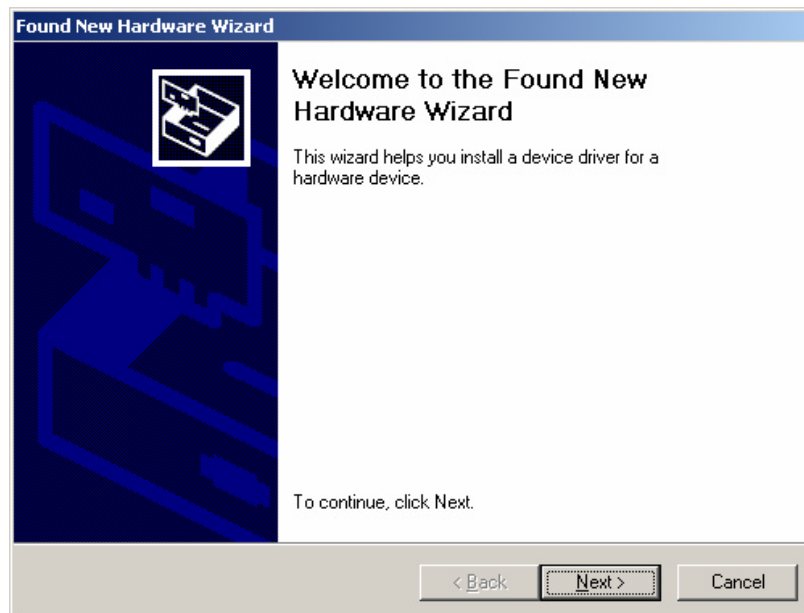
These steps cover the majority of the situations that may be encountered during the install. If a step does not apply to your situation, skip to the next step.

Step 1

- Connect the SS1009 USB cable to the USB connector on the PC
- Windows 2000 should detect the new hardware

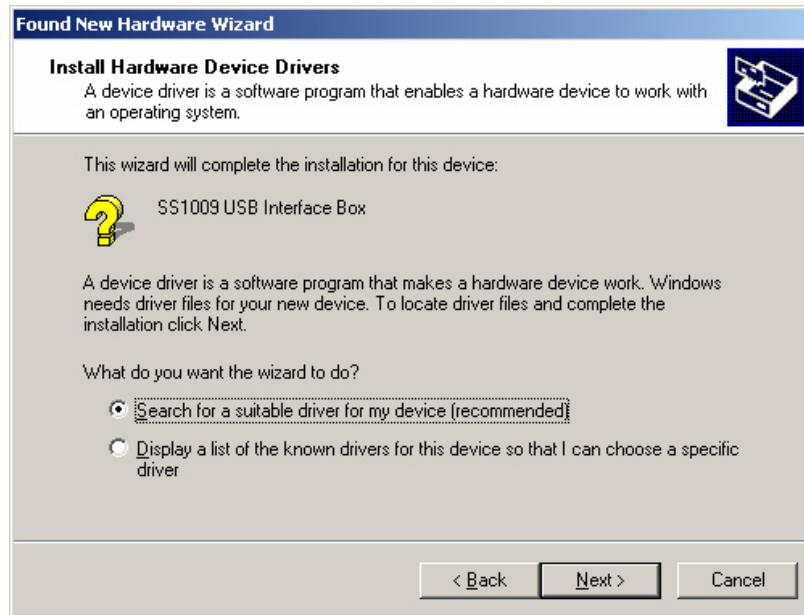
Step 2

- Click 'Next'



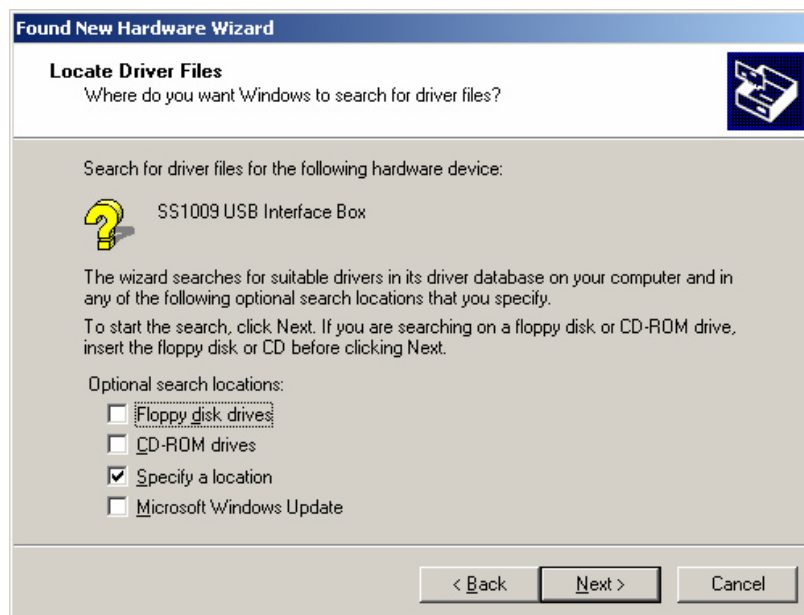
Step 3

- Select 'Search for a suitable driver for my device'
- Click 'Next'



Step 4

- Check 'Specify a location'
- Click 'Next'



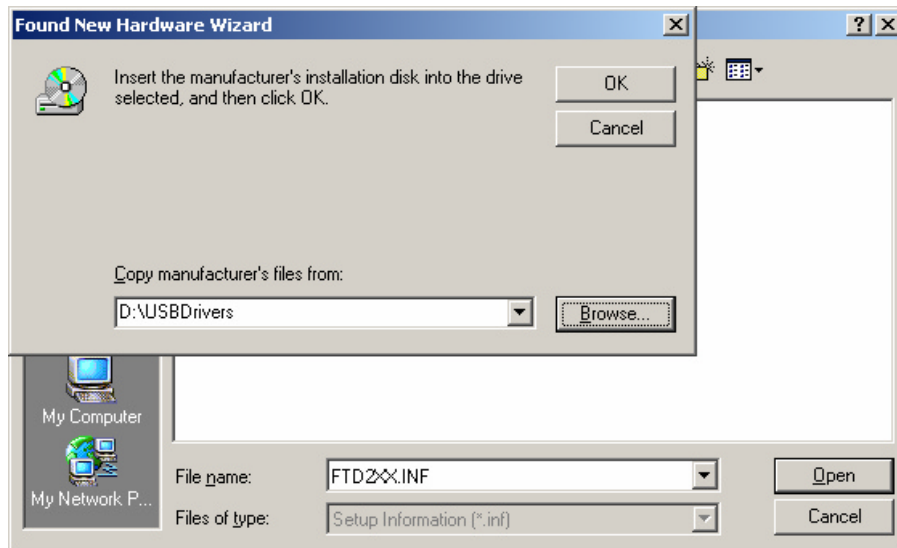
Step 5

- Use the 'Browse...' button to select one of the following locations:

C:\Program Files\Spartek Systems\SparUSB

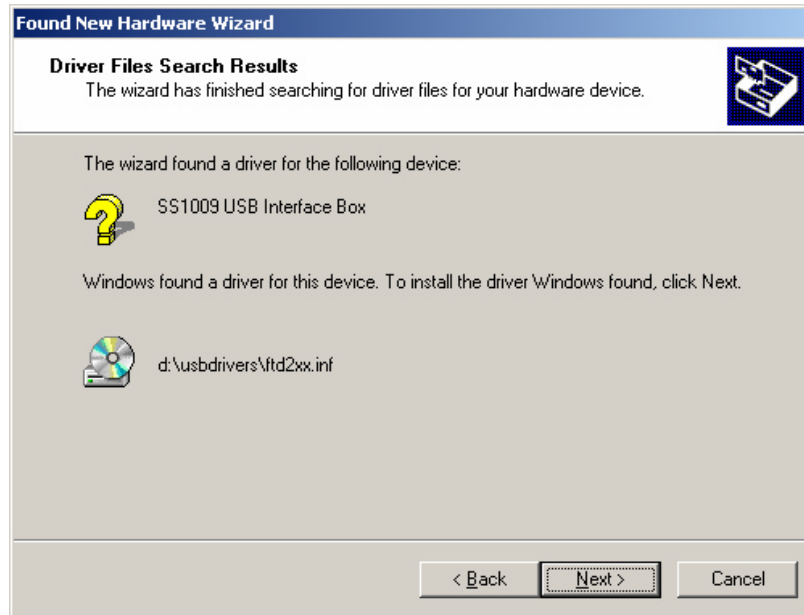
or

On the install CD in the **USBDrivers** directory



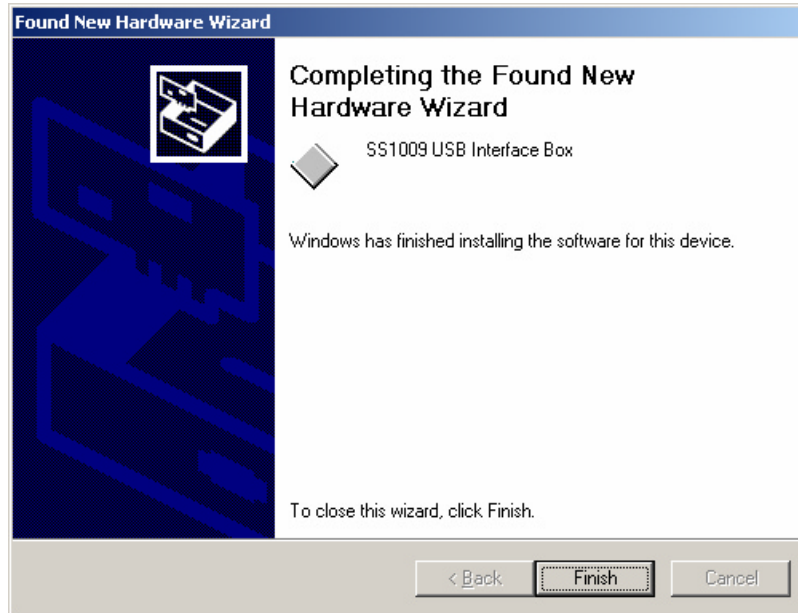
Step 6

- Click 'Next'



Step 7

- Click 'Finish'



Installation Complete

5. Installing on Windows 98 or ME

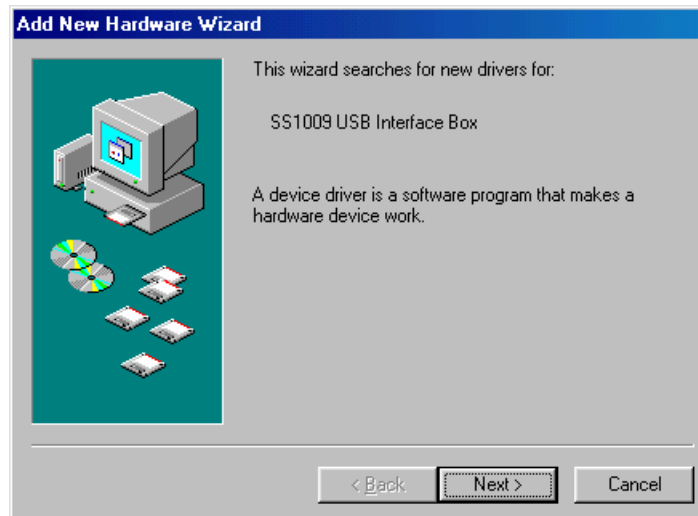
These steps cover the majority of the situations that may be encountered during the install. If a step does not apply to your situation, skip to the next step.

Step 1

- Connect the SS1009 USB cable to the USB connector on the PC
- Windows 98 or ME should detect the new hardware

Step 2

- Click 'Next'



Step 3

- Select 'Search for the best driver for your device.'
- Click 'Next'



Step 4

- Check 'Specify a location:'
- Use the 'Browse...' button to select one of the following locations:

C:\Program Files\SparTek Systems\SparUSB

or

On the install CD in the folder **USBDrivers**



Step 5

- Click 'Next'



Step 6

- Click 'Finish'



Installation Complete