

## Procedure to install Matrix drivers for Windows 8

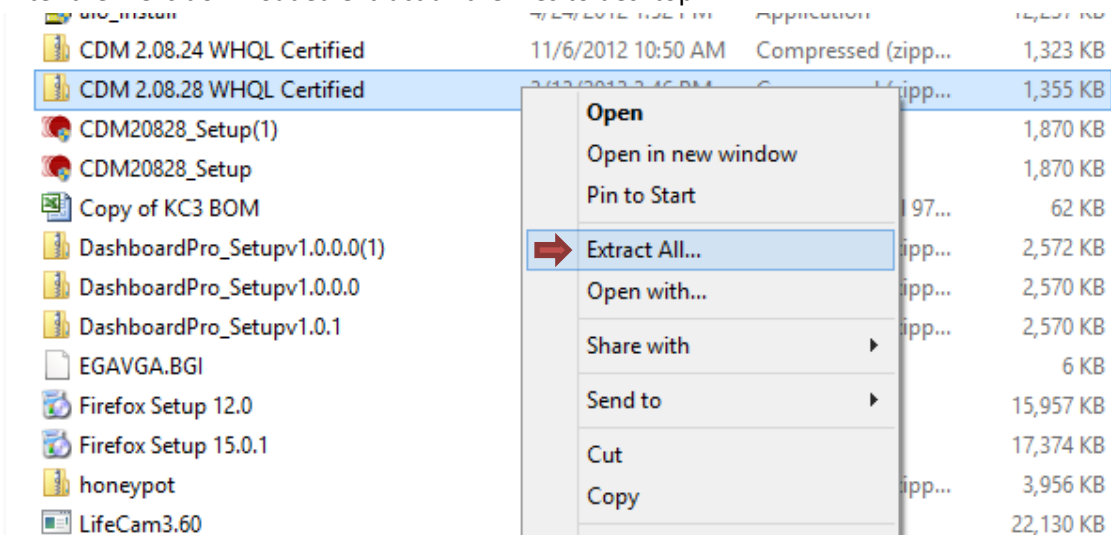
- Make sure Matrix is installed on your system.
- Go to - <http://www.ftdichip.com/Drivers/D2XX.htm>

Currently Supported D2XX Drivers:

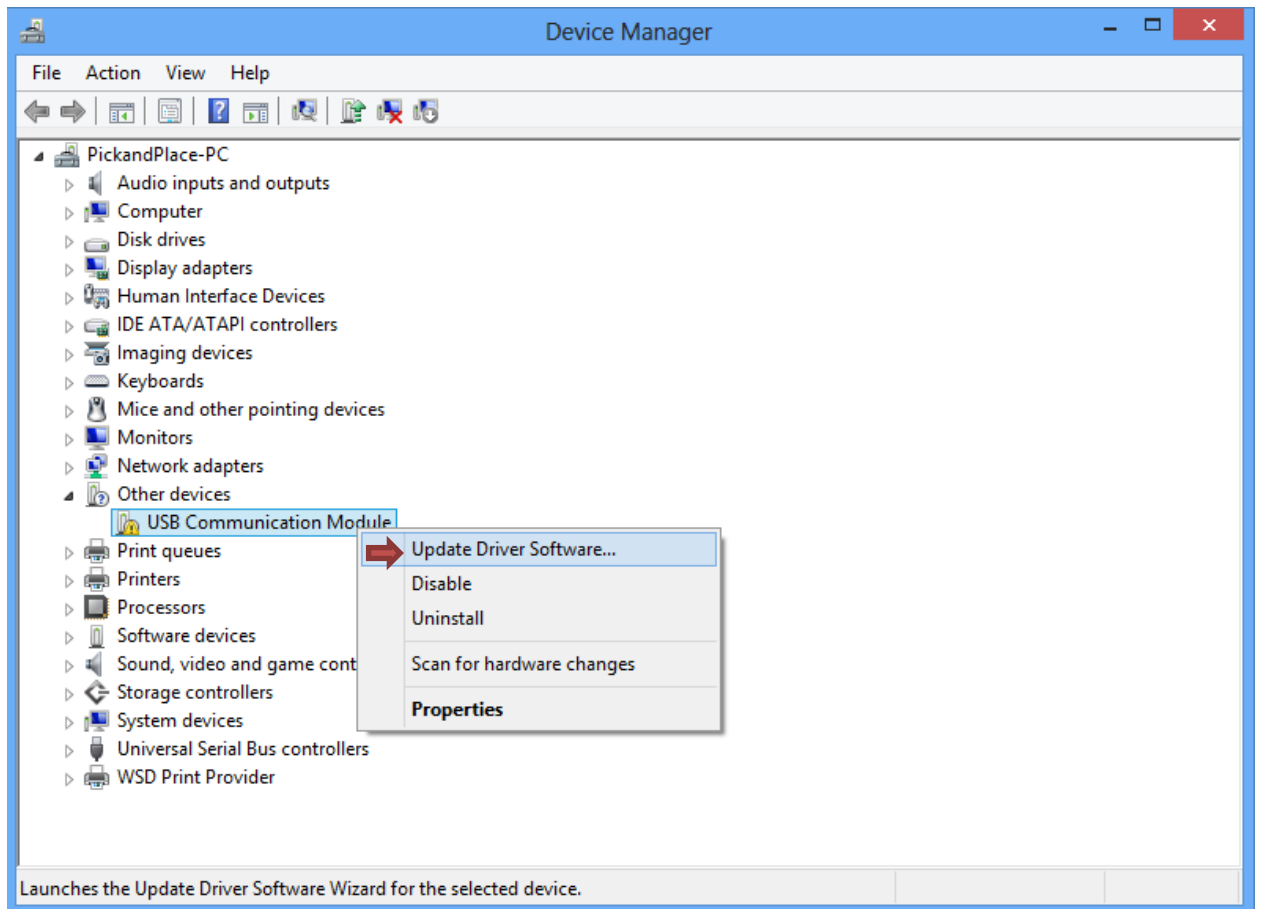
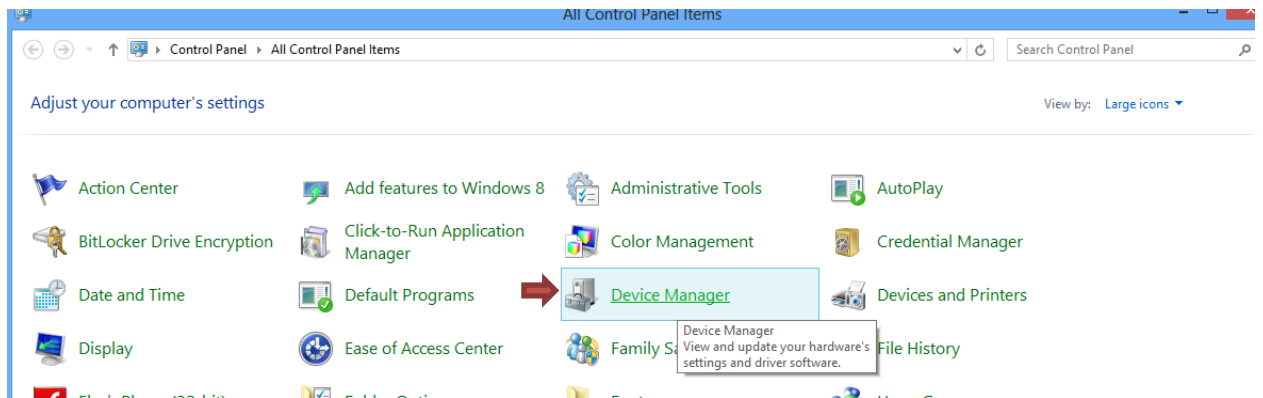
Click here to download drivers for 32-bit or 64-bit machine.

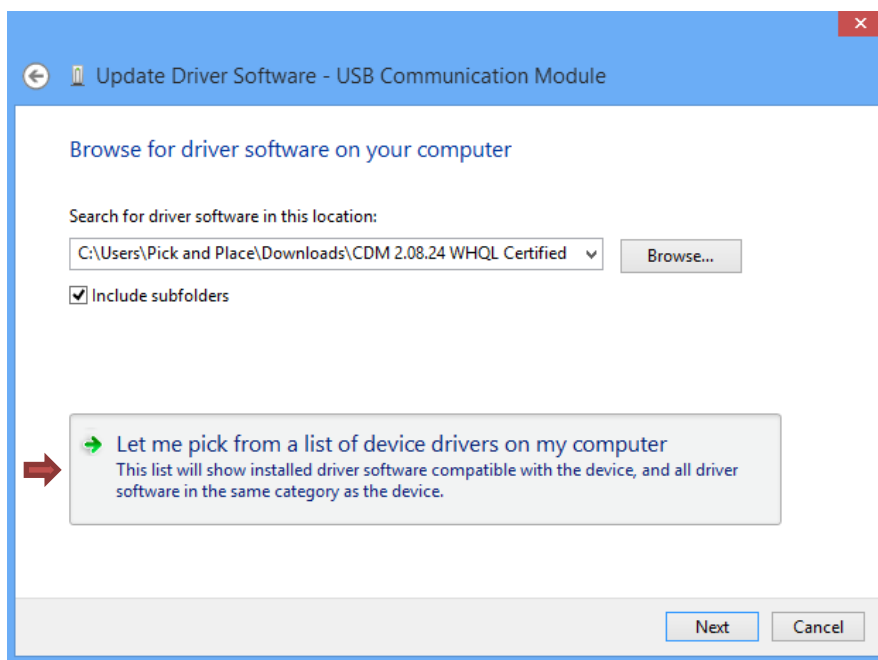
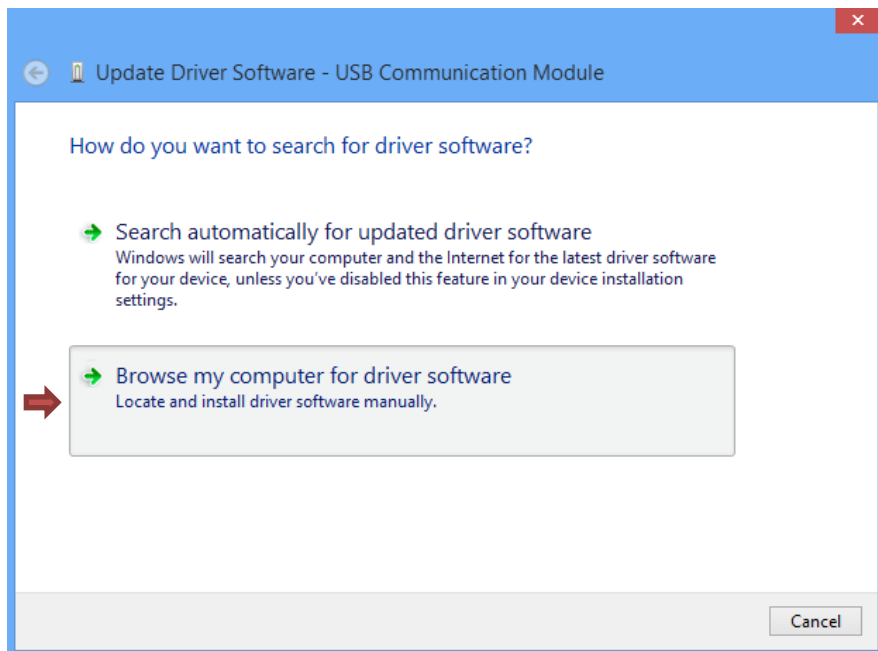
Operating System	Release Date	Processor Architecture			
		x86 (32-bit)	x64 (64-bit)	PPC	ARM
Windows*	2013-02-20	<a href="#">2.08.28</a>	<a href="#">2.08.28</a>	-	-
Linux	2012-06-29	1.1.12	1.1.12	-	1.1.12 Suitable for Raspberry Pi

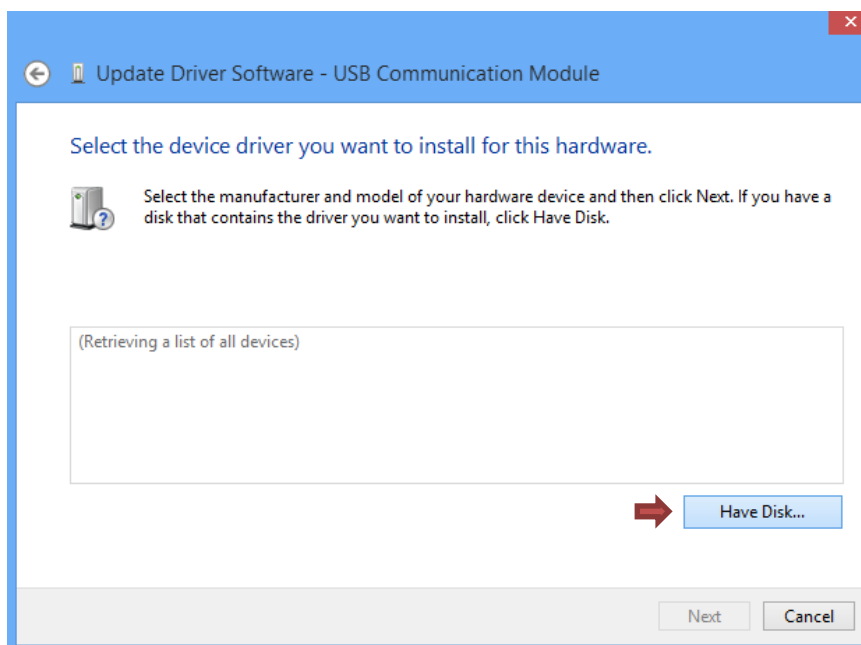
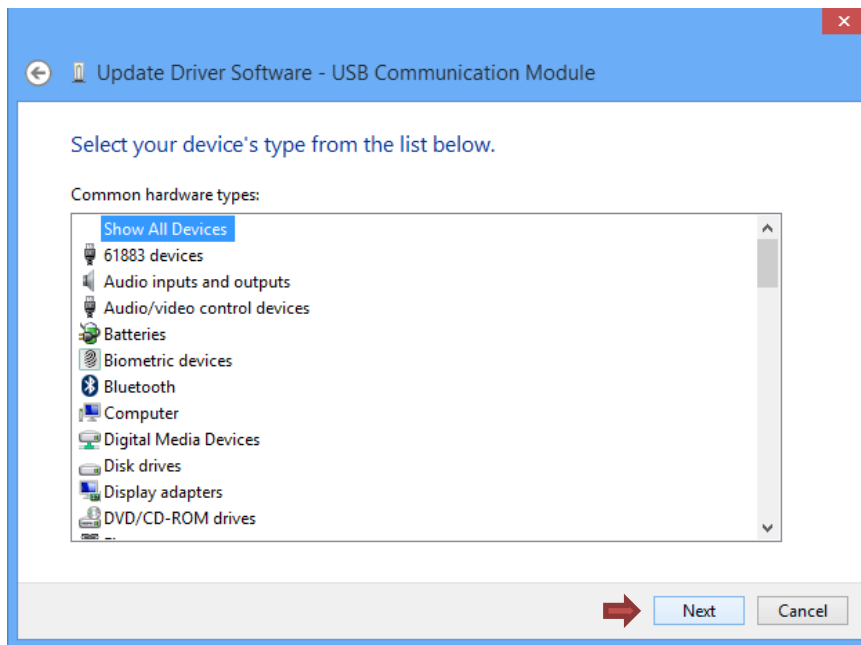
- Connect the USB COMMUNICATION MODULE to your computer and open Matrix.
- After the file is downloaded extract all the files to desktop.

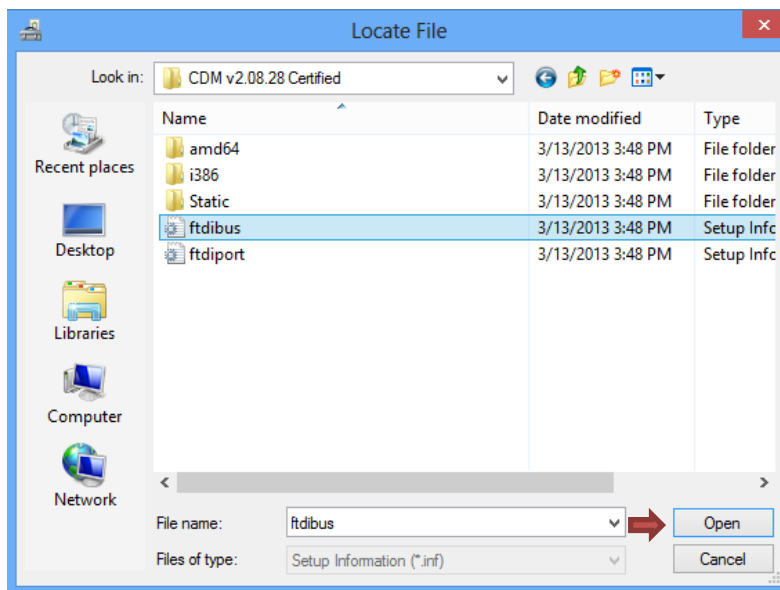
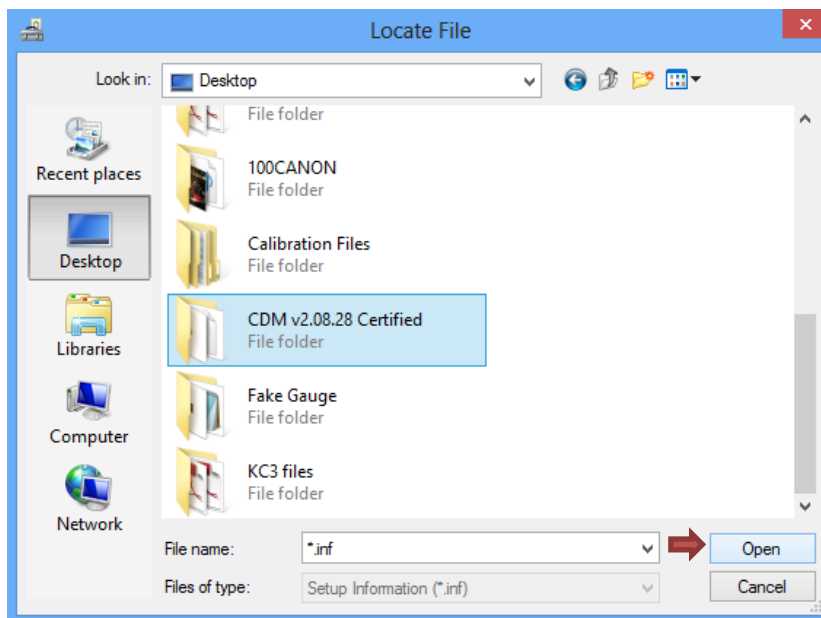
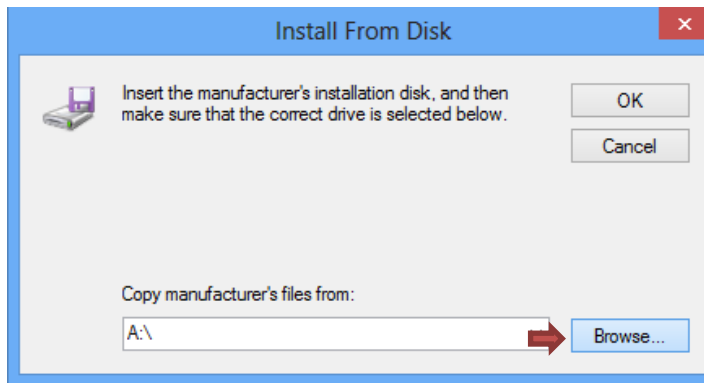


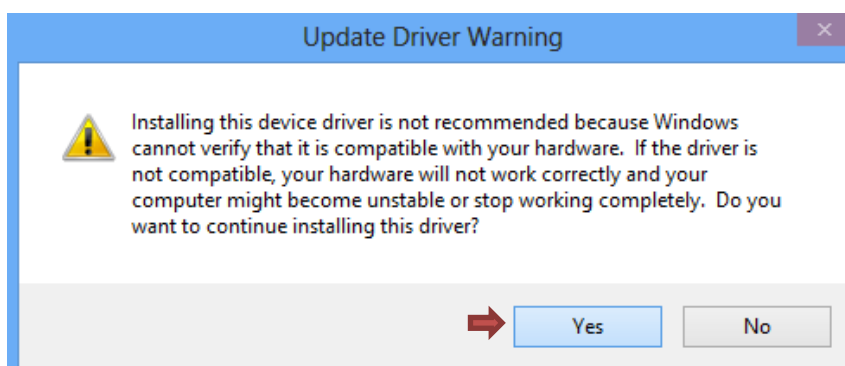
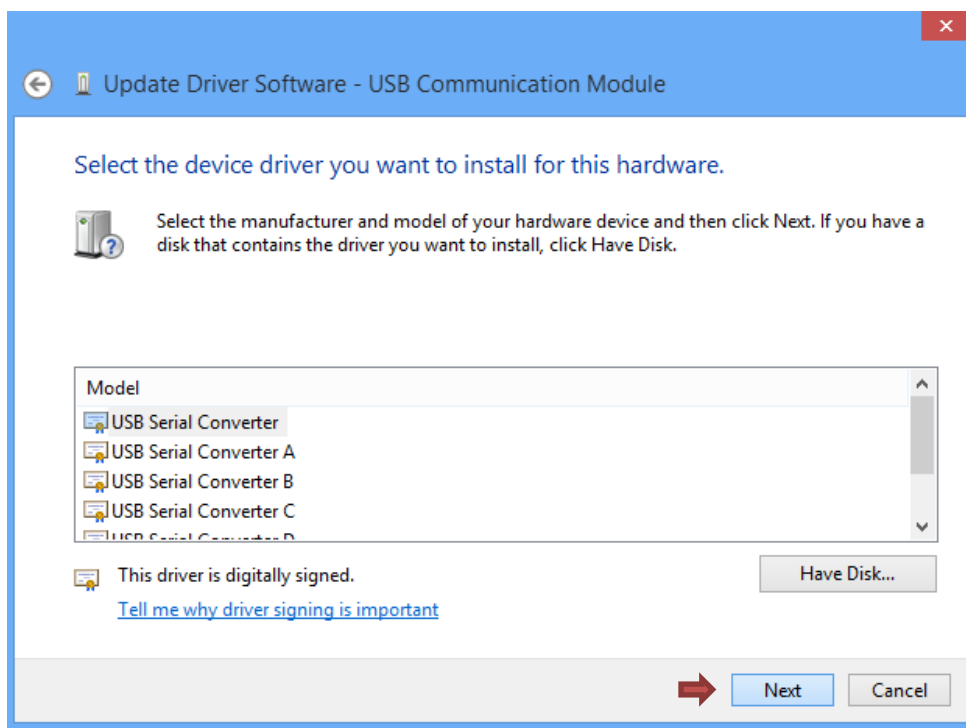
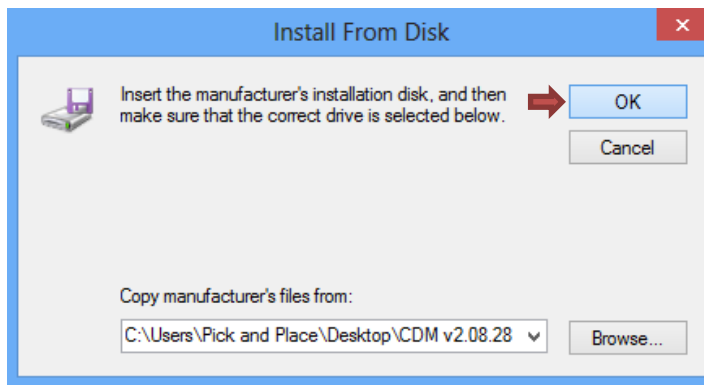
- Open Control Panel by pressing the start button and typing Control Panel.
- Then open Device Manager and follow the steps below:

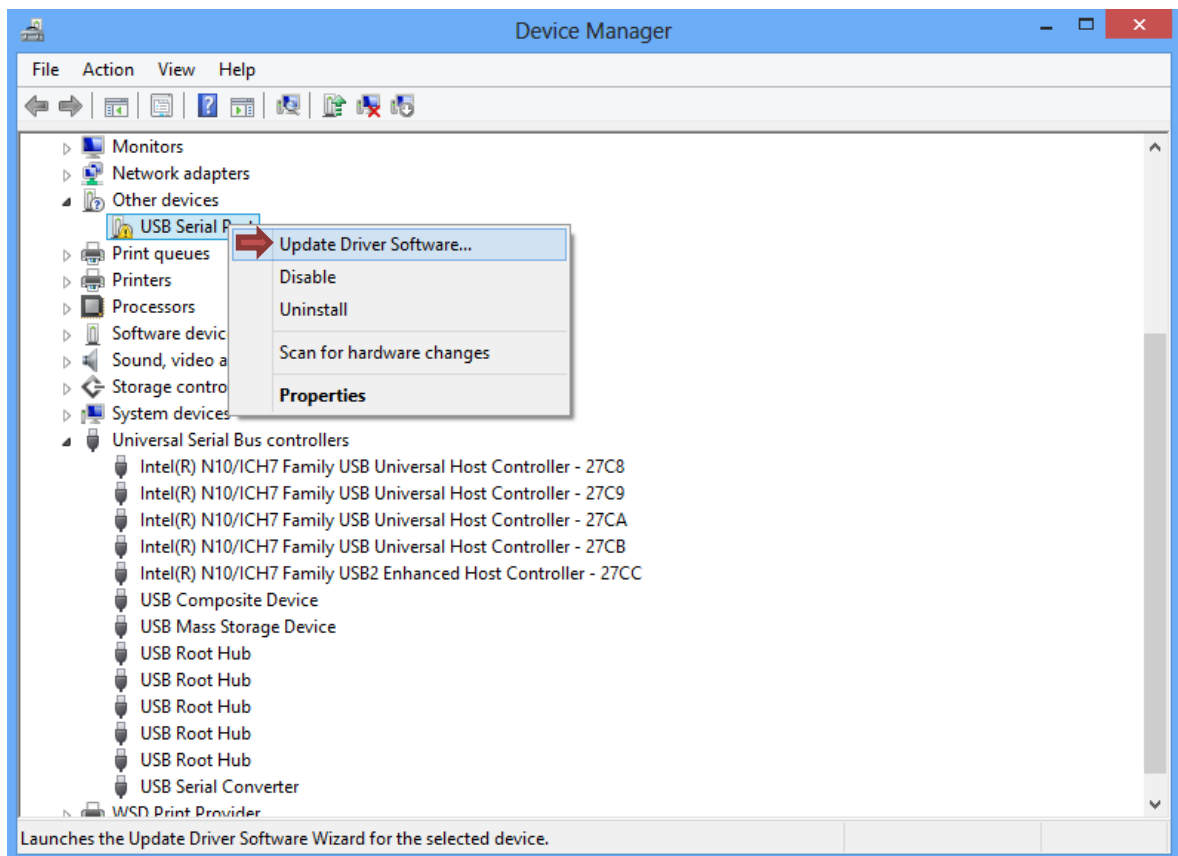
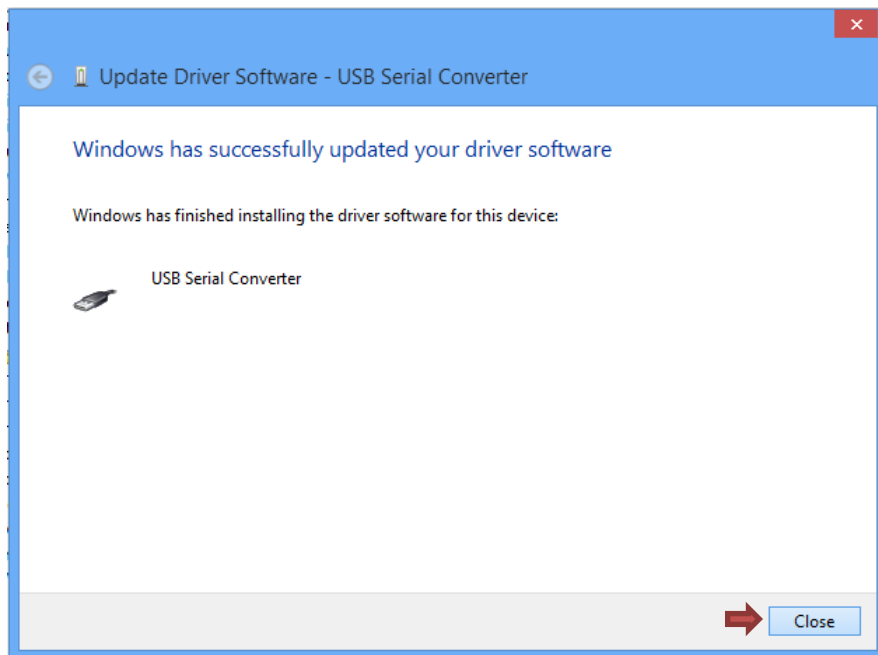


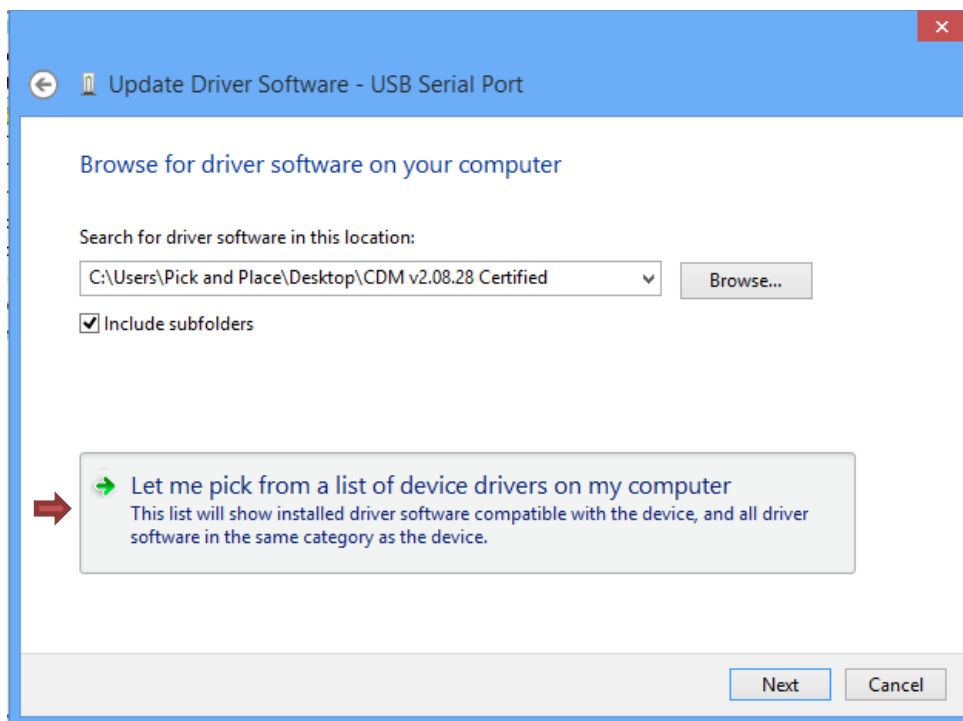
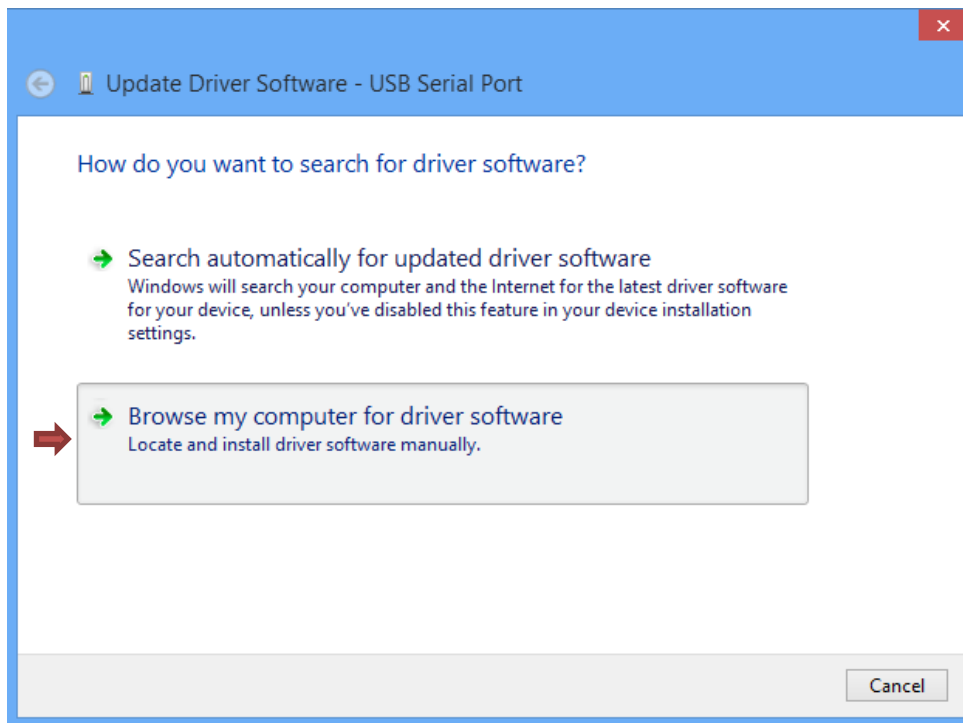




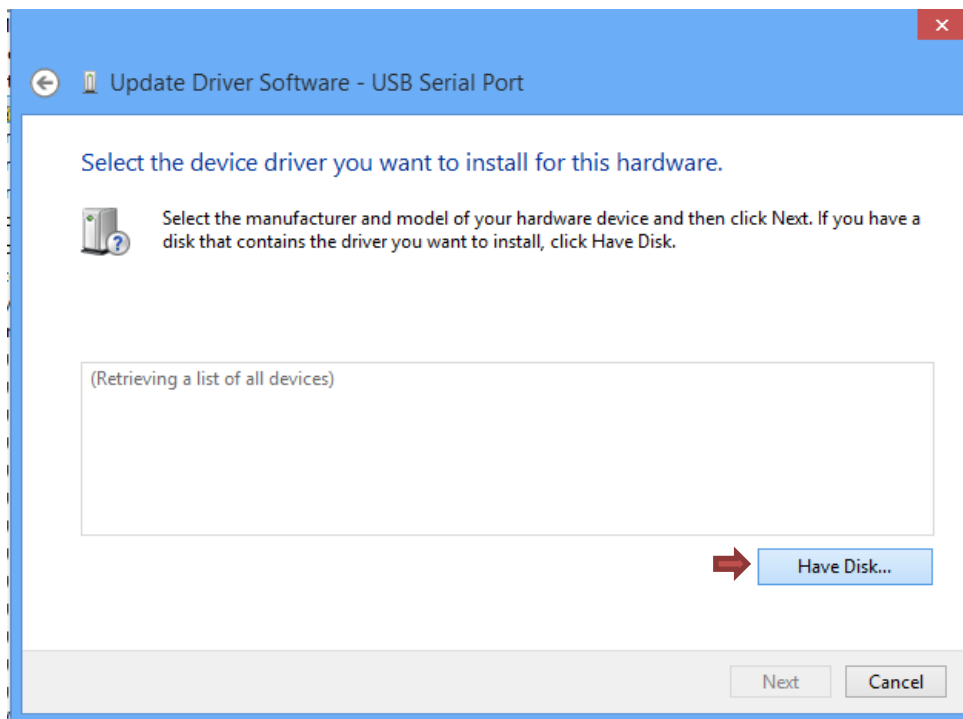
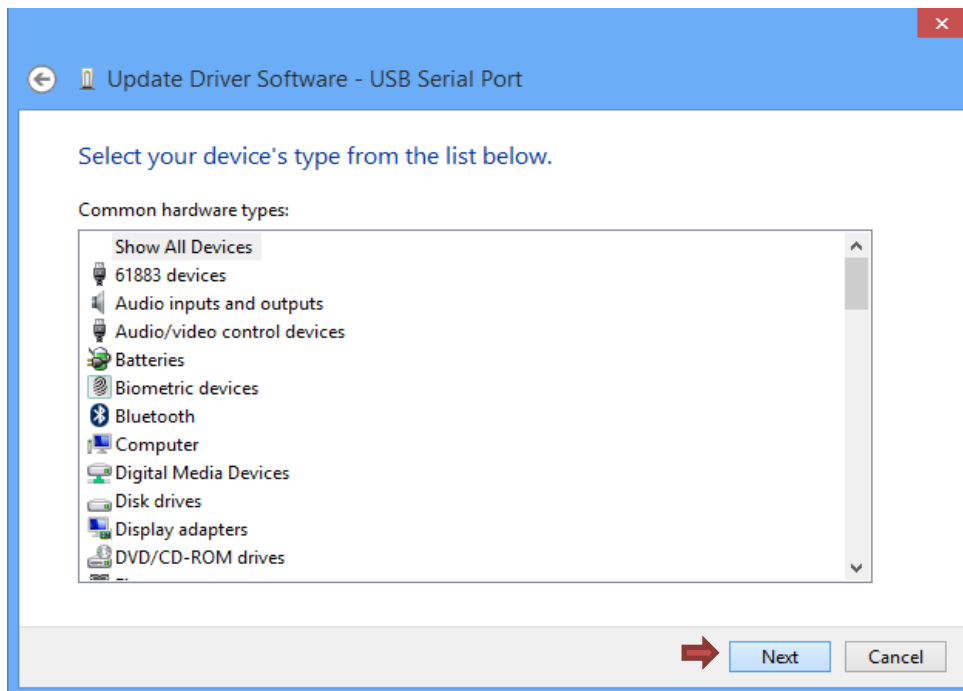


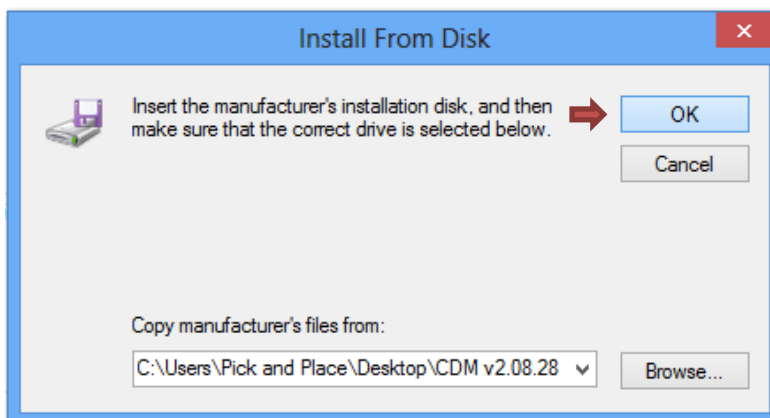
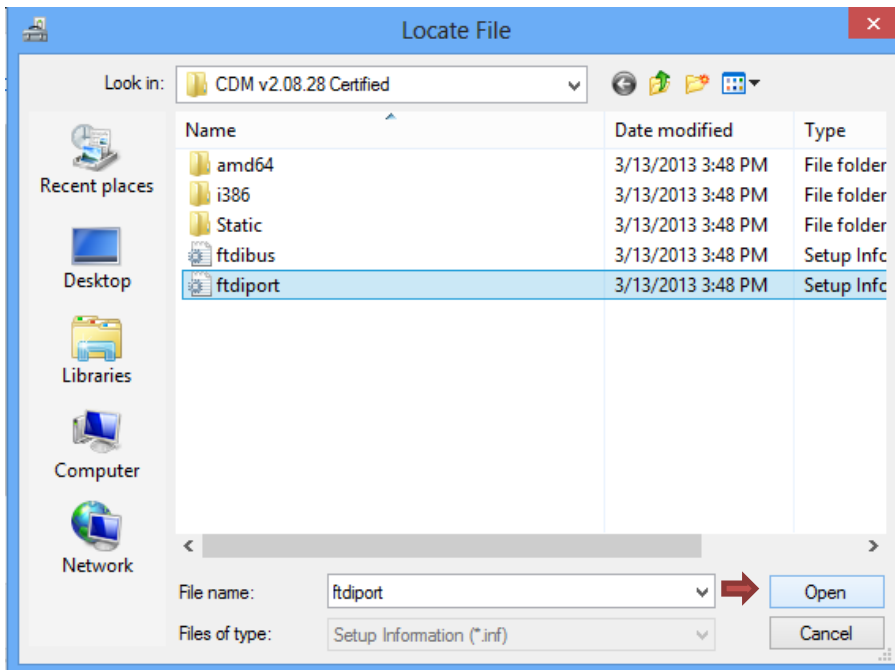
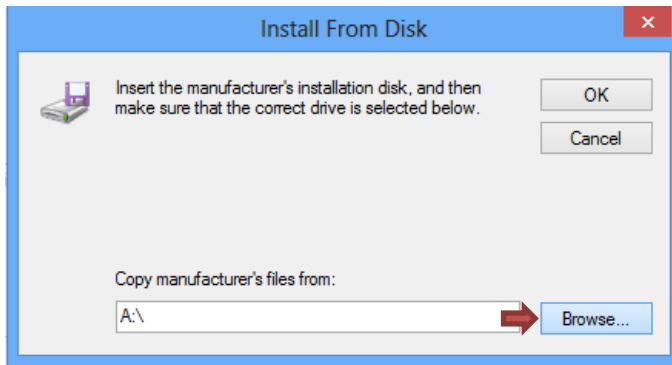


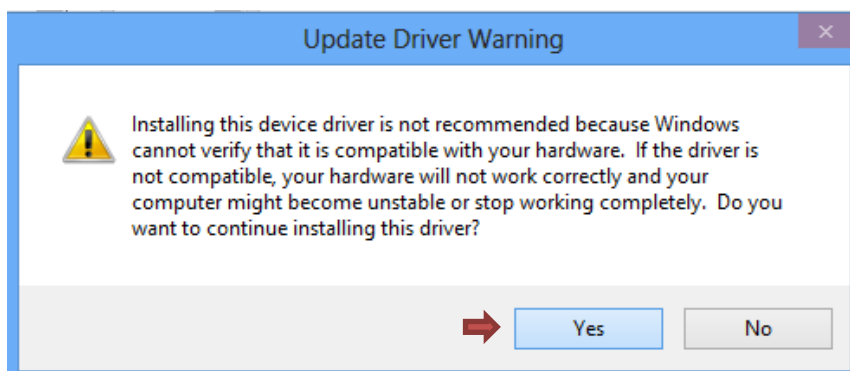
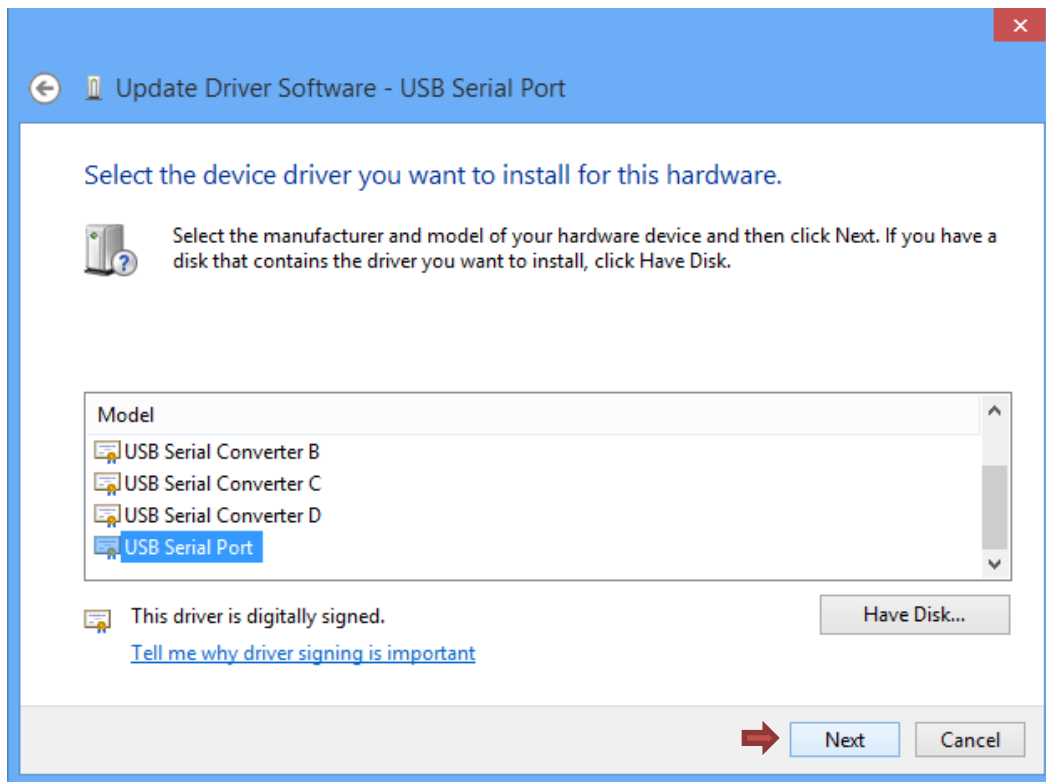


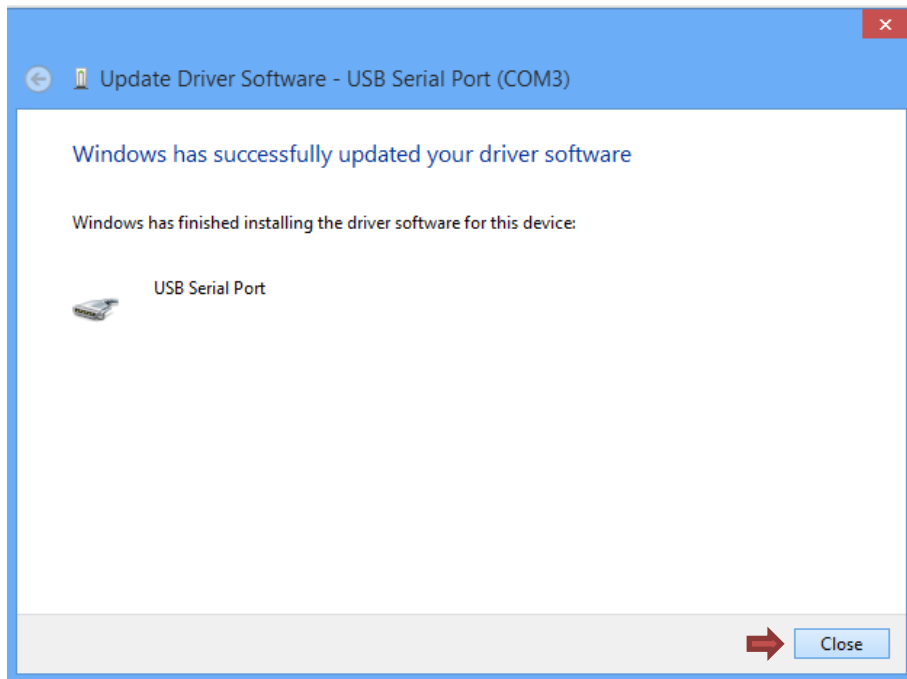




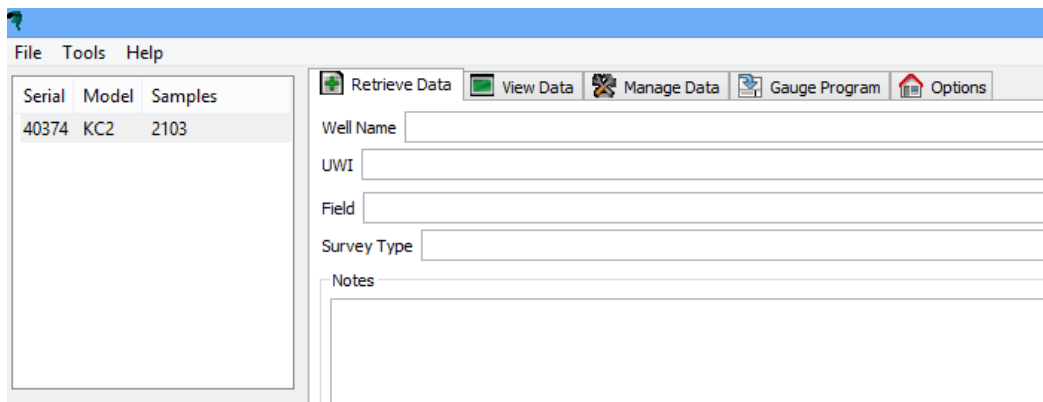








- 
- Close the Device Manager and go to Matrix.
- Plug-In a tool.



- 
- If nothing shows up in 2 minutes, unplug and re-plug USB.